

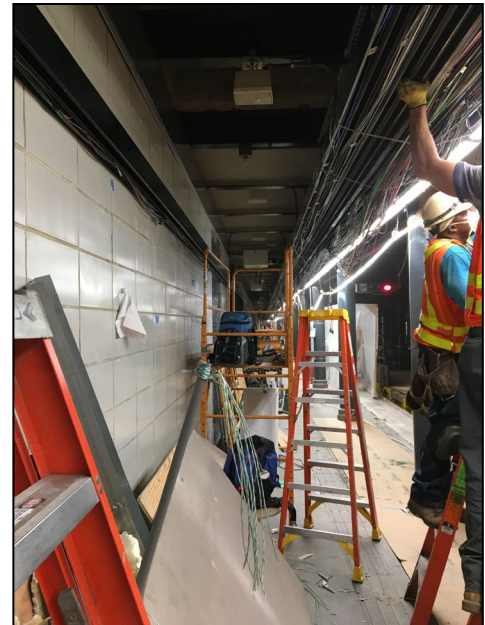
CCM for the Enhanced Stations Improvements (Packages 1, 2, and 8)



Garg Consulting Services, Inc.

The Enhanced Station Initiative (ESI) Program focuses on improving the customer experience by providing a State of “Good Repair” (SGR) in stations and the development of underlying station aesthetics through construction and design innovation. The Program includes thirty-one (31) pre-selected stations located in all five boroughs. The work includes making the stations cleaner, brighter, and easier to navigate by utilizing means such as improved lighting, more intuitive way-finding, and providing amenities like Wi-Fi and cellular connectivity.

Garg is providing inspection support for Package 1 Stations (R Line - 53 Street Station, Bay Ridge Ave Station, and Prospect Ave Station) and Package 2 Stations (Astoria Line – 30th Ave Station, Broadway Station, 36th Street Station, and 39th Street Station).



Garg is also providing construction management support for the renovation of multiple stations in the Boroughs of Manhattan and Bronx under NYCT Contract CM-1059. The Stations include 174th – 175th Street – Bronx, 167th Street – Bronx, and 145th Street – Manhattan.

Garg’s responsibilities include the inspection of:

- Demolition of platform floor and stairs.
- Finish work including metal ceiling, granite flooring, and ceramic wall tiles at mezzanine and both platforms.
- Reconstruction of entrance stairs and platform stairs.
- Steel beam and cast-iron column repair work.
- Art work and dash board digital screen installation.
- AFC turnstile installation.
- Reconstruction of token booth.
- Hand rail and guard rails at mezzanine and platform stairways.
- Installation of new light fixtures at ceiling and LED lights at stairway handrails.
- Dash boards and canopy installation.

Organization Name	Location	Project Duration			Dollar Amount	Prime/Sub-Consultant
		Contract Date	Start Year	Completion Year	Project Cost	Sub-Consultant
MTA-NYCT	Brooklyn, Queens, Manhattan, NY	03/31/17	2017	2019	\$117.4 Million	Sub-Consultant